

CMV Sharper Finish
“The Ironer People”



IFC / IFCS Dimensions



CMV Sharper Finish

4500 Augusta Boulevard
Chicago IL 60651

Phone: 773-276-4800

Fax: 773-276-6878

Email: sales @cmvsharperfinish.com

www.ironerpeople.com

In view of CMV's policy of providing the best products possible, CMV reserves the right to change specifications and appearance without notice. Contact the sales department for exact specifications and dimensions. CMV manufactures over 100 ironer and folder models that are sold throughout the world.

CMV Sharper Finish

4500 Augusta Boulevard
Chicago IL 60651

The IFC is an ironer, primary folder, and cross folder that discharges the finished linen to a table on either the left or right side of the cross folder.

The IFCS is an ironer, primary folder, cross folder, stacker and discharge conveyor that delivers the finished and stacked linen to either the operators at the front of the ironer or the rear.

Left or right hand discharge is always determined by facing the front of the ironer. The discharge side of the cross folder can be converted in the field.

The drawing illustrates several features with dashed lines. This is because the location of these features can be changed to meet your specific needs. The bypass table at the rear of the cross folder is not supplied with each IFC but can be ordered separately. It is not required for operation if you choose not to use it. The rear bypass table allows you to use the IFC just as you would a separate ironer / folder but is not necessary and would give you more space if you need it. The bypass table can also be used as the rear receiving table for the ironer / primary folder if it is used without the cross folder.

If you ordered the IFC and are not using a stacker and conveyor, a table is provided in lieu of the stacker. The table extends 19" (483 mm) beyond the end of the cross folder conveyor and is 34.5" (876 mm) wide.

The stacker discharge conveyor shown on the drawing is the standard length. Custom lengths are available so this dimension may vary.

Access to the inside of the ironer / primary folder frames for maintenance can be done without moving the stacker or conveyor. The frame panels are hinged from the back of the frame.

The cross folder is provided with casters that allow you to easily set it in place and move it away from the ironer for repair if necessary.

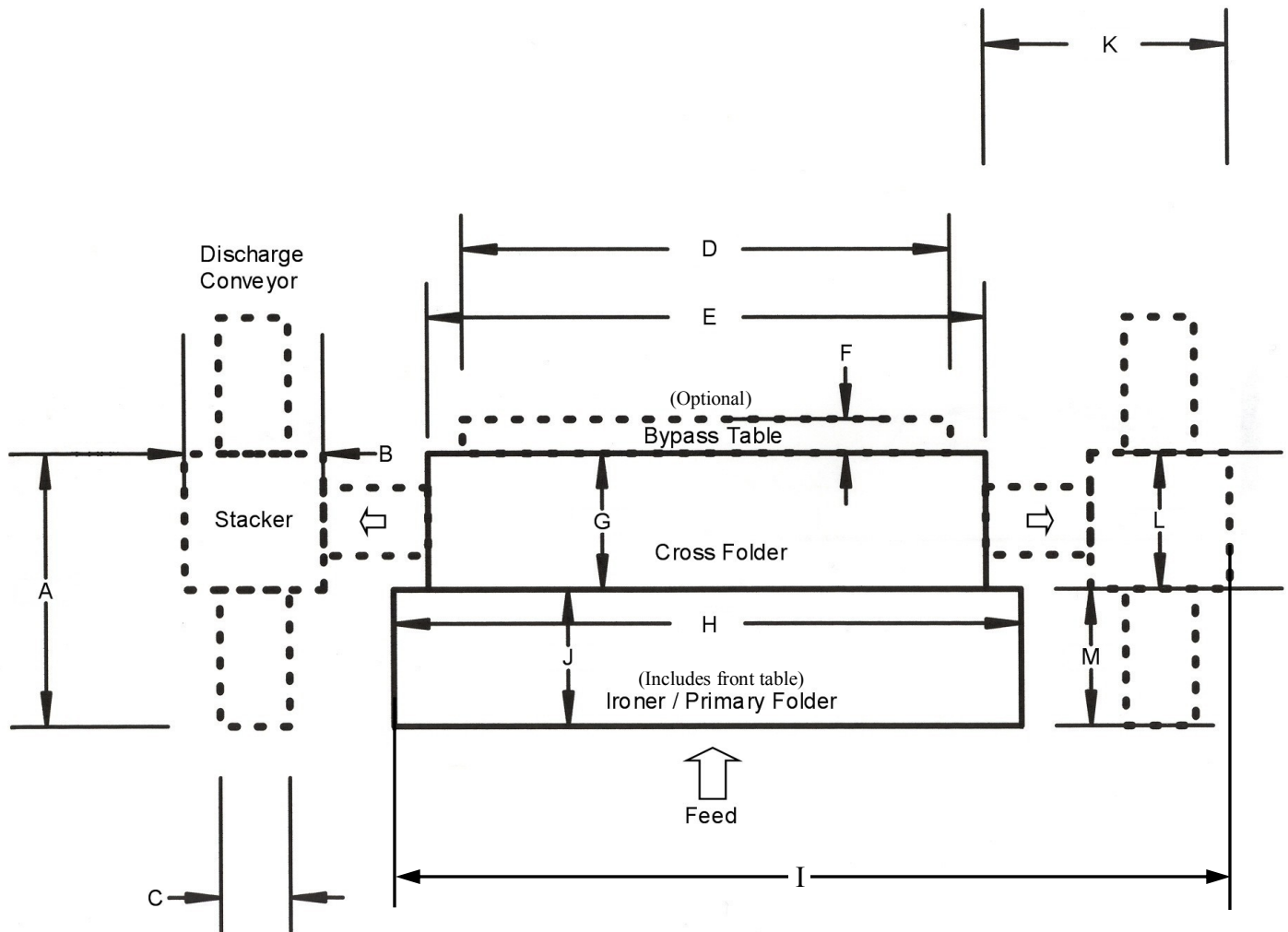
The rear bypass table on the cross folder is optional and not included as standard equipment on the IFC/S.

CMV Sharper Finish

4500 Augusta Boulevard
Chicago IL 60651

IFC / IFCS

Floor Plan Dimensional Drawing



CMV Sharper Finish

IFCS 2000

4500 Augusta Boulevard
Chicago IL 60651

Model	IFCS2000x120	IFCS2000x132	IFCS2000x136
A	98" (2489 mm)*	98" (2489 mm)*	98" (2489 mm)*
B	45" (1143mm)	48" (1219 mm)	49" (1244 mm)
C	47" (1194 mm)	47" (1194 mm)	47" (1194 mm)
D	127.5" (3238 mm)	139.5" (3543 mm)	143.5" (3645 mm)
E	157" (3988 mm)	169" (4298 mm)	174" (4420 mm)
F	18" (457 mm)	18" (457 mm)	18" (457 mm)
G	44.5" (1130 mm)	44.5" (1130 mm)	44.5" (1130 mm)
H	162" (4115 mm)	174" (4420 mm)	179" (4547 mm)
I	227" (5766 mm)	239" (6071 mm)	244" (6198 mm)
J	63" (1601 mm)	63" (1601 mm)	63" (1601 mm)
K	67" (1702 mm)	67" (1702 mm)	67" (1702 mm)
L	57" (1448 mm)	57" (1448 mm)	57" (1448 mm)
M	41" (1042 mm)*	41" (1042 mm)*	41" (1042 mm)*

CMV Sharper Finish

IFCS 2400

4500 Augusta Boulevard
Chicago IL 60651

Model	IFCS2400x120	IFCS2400x132	IFCS2400x136
A	98" (2489 mm)*	98" (2489 mm)*	98" (2489 mm)*
B	45" (1143mm)	45" (1143mm)	45" (1143mm)
C	47" (1194 mm)	47" (1194 mm)	47" (1194 mm)
D	127.5" (3238 mm)	139.5" (3543 mm)	143.5" (3645 mm)
E	157" (3888 mm)	169" (4293 mm)	179" (4547 mm)
F	18" (457 mm)	18" (457 mm)	18" (457 mm)
G	44.5" (1130 mm)	44.5" (1130 mm)	44.5" (1130 mm)
H	167" (4242 mm)	179" (4547 mm)	184" (4674 mm)
I	225" (5715 mm)	237" (6020 mm)	241" (6121 mm)
J	63" (1600 mm)	63" (1600 mm)	63" (1600 mm)
K	61" (1549 mm)	61" (1549 mm)	61" (1549 mm)
L	57" (1448 mm)	57" (1448 mm)	57" (1448 mm)
M	41" (1042 mm)*	41" (1042 mm)*	41" (1042 mm)*

* This is the standard length. Custom lengths are available.

CMV Sharper Finish

IFCS 3000

4500 Augusta Boulevard
Chicago IL 60651

Model	IFCS3000x120	IFCS3000x132	IFCS3000x136
A	98" (2489 mm)*	98" (2489 mm)*	98" (2489 mm)*
B	45" (1143mm)	45" (1143mm)	45" (1143mm)
C	47" (1194 mm)	47" (1194 mm)	47" (1194 mm)
D	127.5" (3238 mm)	139.5" (3543 mm)	143.5" (3645 mm)
E	157" (3988 mm)	169" (4293 mm)	174" (4420 mm)
F	18" (457 mm)	18" (457 mm)	18" (457 mm)
G	44.5" (1130 mm)	44.5" (1130 mm)	44.5" (1130 mm)
H	185" (4699 mm)	197" (5004mm)	202" (5131 mm)
I	236" (5994 mm)	248" (6299 mm)	251" (6376 mm)
J	70" (1778 mm)	70" (1778 mm)	70" (1778 mm)
K	65" (1651 mm)	65" (1651 mm)	65" (1651 mm)
L	57" (1448 mm)	57" (1448 mm)	57" (1448 mm)
M	41" (1042 mm)*	41" (1042 mm)*	41" (1042 mm)*

* This is the standard length. Custom lengths are available.

CMV Sharper Finish

IFCS 3600

4500 Augusta Boulevard
Chicago IL 60651

Model	IFCS3600x120	IFCS3600x132	IFCS3600x136
A	98" (2489 mm)*	98" (2489 mm)*	98" (2489 mm)*
B	45" (1143mm)	45" (1143mm)	45" (1143mm)
C	47" (1194 mm)	47" (1194 mm)	47" (1194 mm)
D	127.5" (3238 mm)	139.5" (3543 mm)	143.5" (3645 mm)
E	157" (3988 mm)	169" (4293 mm)	174" (4420 mm)
F	18" (457 mm)	18" (457 mm)	18" (457 mm)
G	44.5" (1130 mm)	44.5" (1130 mm)	44.5" (1130 mm)
H	191" (4851 mm)	203" (5156 mm)	208" (5283 mm)
I	239" (6071 mm)	251" (6376 mm)	256" (6503 mm)
J	79" (2007 mm)	79" (2007 mm)	79" (2007 mm)
K	65" (651 mm)	65" (651 mm)	65" (651 mm)
L	57" (1448 mm)	57" (1448 mm)	57" (1448 mm)
M	41" (1042 mm)*	41" (1042 mm)*	41" (1042 mm)*

* This is the standard length. Custom lengths are available.